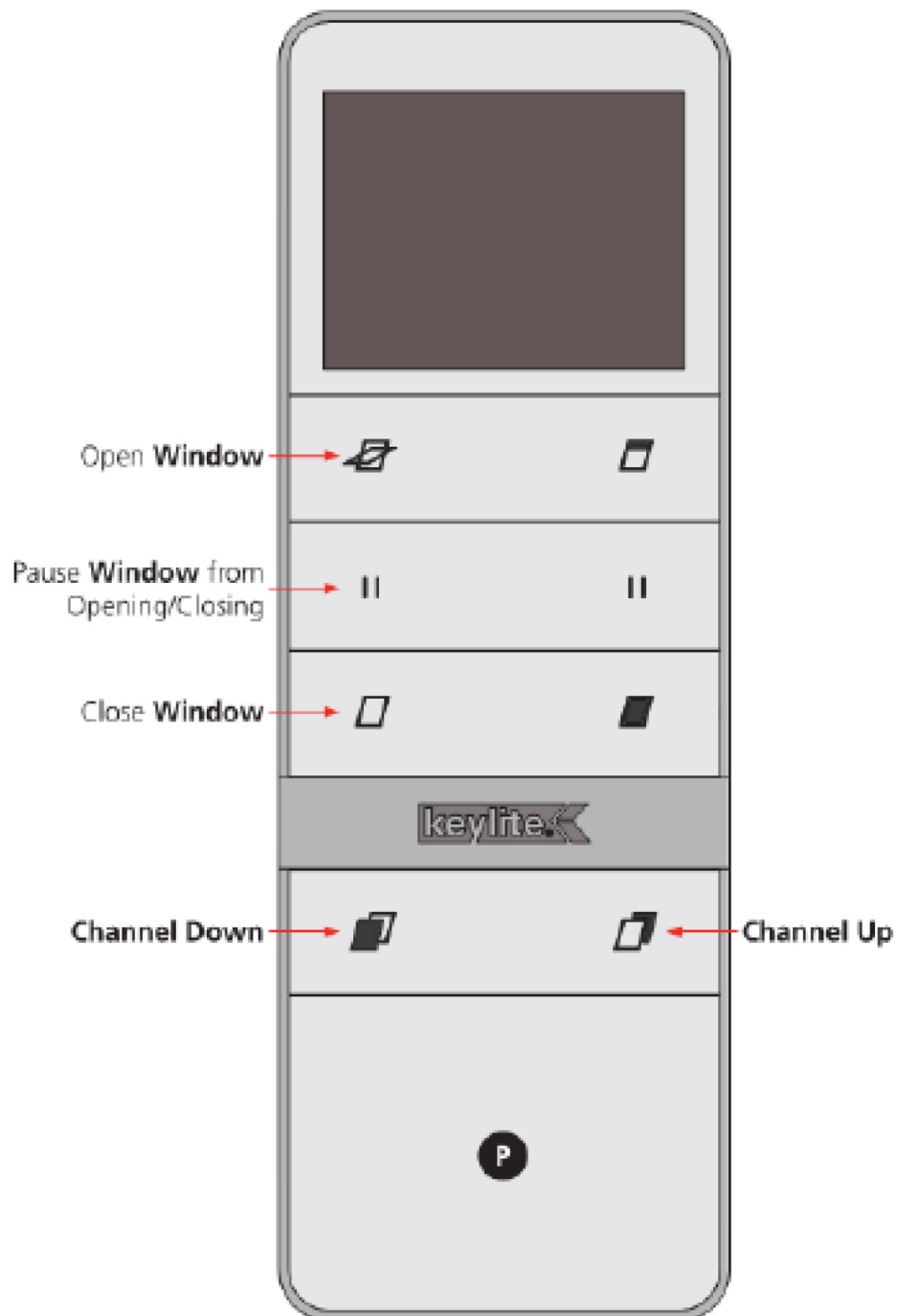




keylite® 



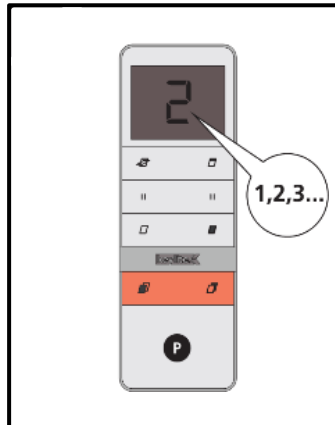
Contents

1.0	RWE Skylight Not Working	2
1.1	Check That The Remote Control Is On The Correct Channel	2
1.2	Check The Power Source For The Skylight.	2
1.3	Remote Not Working	3
1.4	Weather Conditions	4
2.0	Setting Up the RWE Skylight with your Remote Control	5
3.0	Adding A Skylight to A New Channel	7
4.0	Resetting the Skylight ECU	8
5.0	Skylight Blind Not Working	10
5.1	Check That The Remote Control Is On The Correct Channel	10
5.2	Remote Control not working, Check Battery	10
5.3	Are you using the correct Remote Control?	11
5.4	Resetting the Blinds Remote – MK I	12
5.5	Resetting the Blinds Remote – MK II & MK III	13
5.6	Resetting the Limits on the Blinds	14
6.0	Further Assistance & Contact Details	15

1.0 RWE Skylight Not Working

1.1 Check that the remote control is on correct Channel

This will be the Channel it has been programmed to at the time of install. To select the correct channel please follow the instructions below;



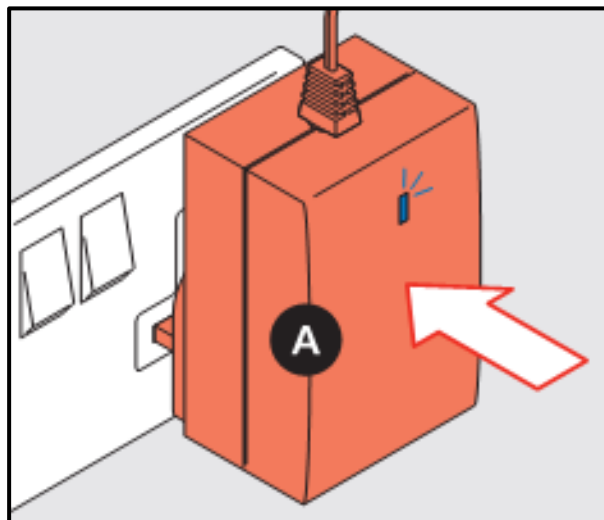
Change the channel on the remote by using the bottom two buttons, the button on the right hand side will move the channels up and the button on the left hand side will move the channels down.

1.2 Check the power source for the Skylight.

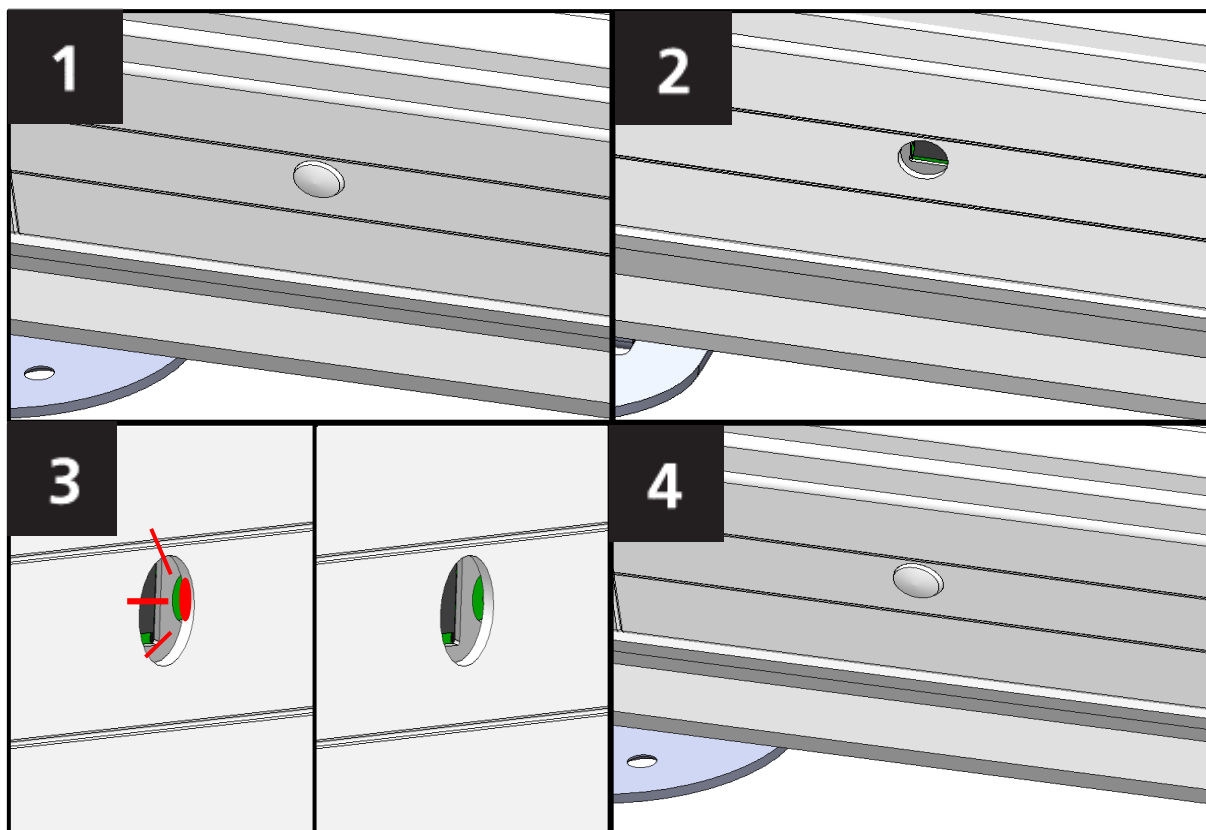
Make sure the Skylight has a constant power source and that it is connected to the power circuit and not to the lighting circuit.

To check the power source going to the Skylight you can either;

- a) Check the transformer plug where the blue light should be on.



- b) Or alternatively you can check the PCB that is located behind cover at the bottom of the Skylight. In order to check the PCB you must first remove the round cover plug along the bottom of the Skylight where you should then be able to see the LED lights in behind and they will either be a green or red light.



1. Locate the Cover Plug along the bottom of the Skylight.
2. Remove the Cover Plug.
3. LED Lights should now be visible behind the Motor Housing.
4. Replace the Cover Plug.

1.3 Remote Not Working

Check that the battery still has power, if you press any of the buttons on the front of the Remote Control the LED Screen should illuminate. If it is not illuminating then you may need to replace the Battery. To replace the battery, simply remove the Cover Plate from the rear of the Remote Control to reveal the Circular Battery as shown below;



1.4 Weather Conditions

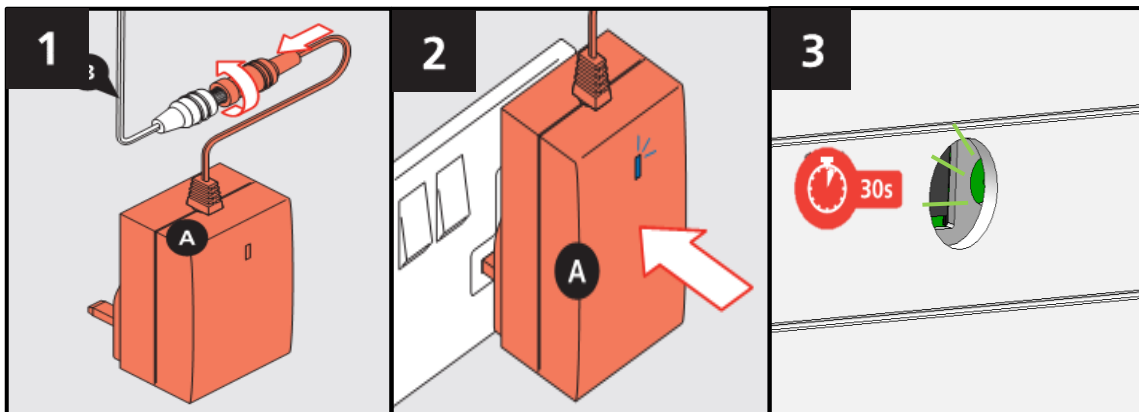
If it is raining or there is dew outside then the Skylight will not open due to rain sensor being activated. It is possible to override the Rain Sensor, however this is not recommended as in the event of further rainfall it will not close automatically as the memory function will still remember that it has been overridden until the next time the window is closed at which point it will return to its factory settings.

To perform the override you must press the open button a few times when the window is in the closed position. It is vital that the Skylight is fully closed in order to re-set rain sensor.

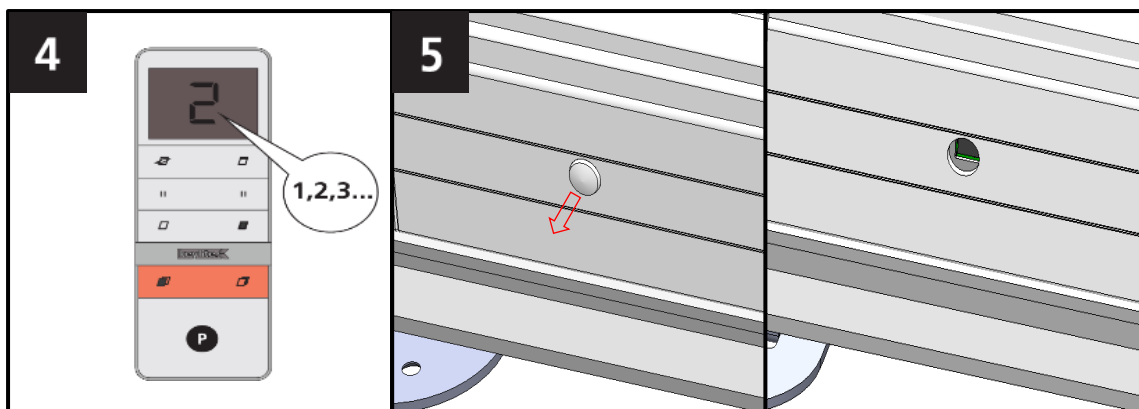
Alternately you can wait for the sensor to dry as it's a heated sensor and will only detect fresh rainfall/dew. Any existing rainfall/dew will be evaporated as a result of the heat emitting from the Rain Sensor. Once all rainfall/dew has been removed from the Rain Sensor you may continue to operate it.

Failing this if you have tried all of the above and Skylight is still not working then please refer to the below.

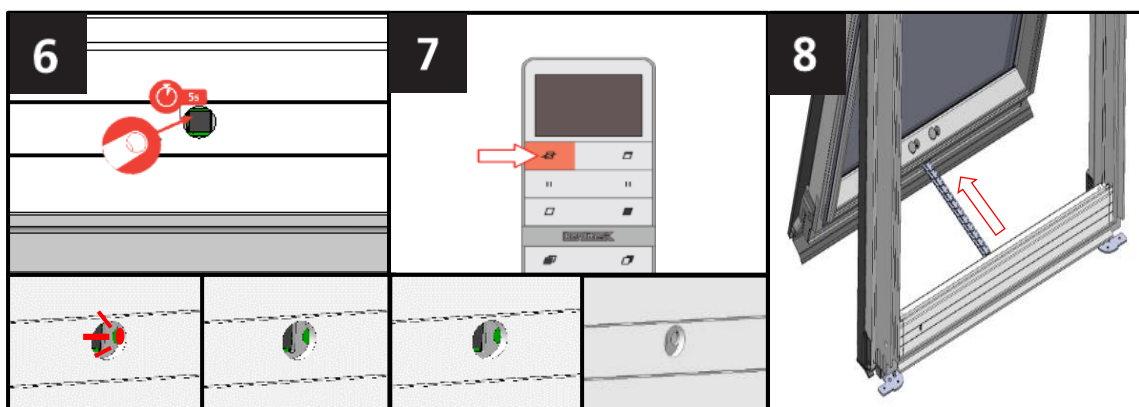
2.0 Setting Up the RWE Skylight with your Remote Control



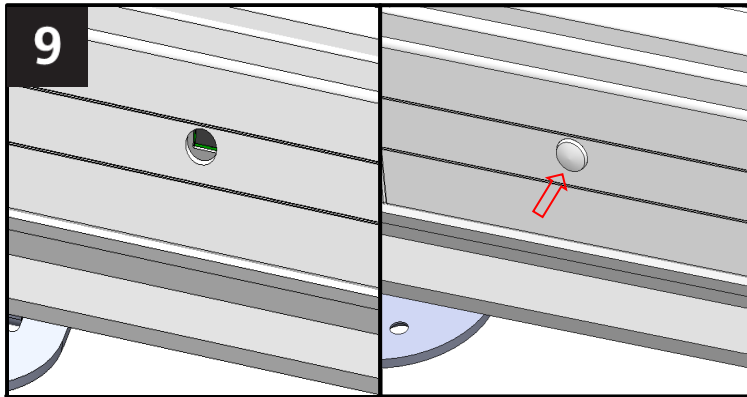
1. Connect the Power Supply as shown in the image above.
2. Plug in the Power Supply and turn it on, a Blue Light will ignite to indicate there is power.
3. When powered up for the first time a green LED will light up for approx. 30 seconds



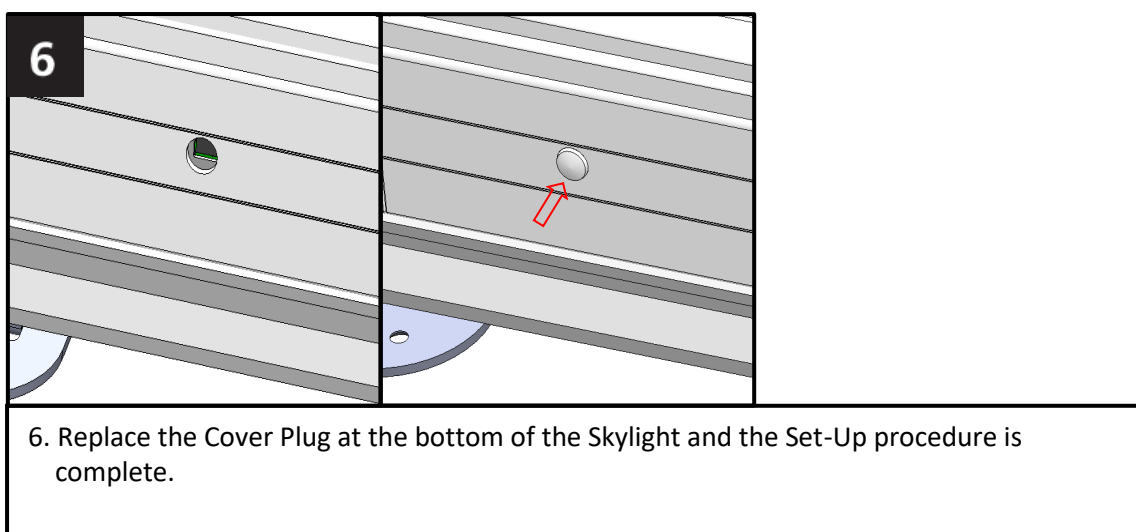
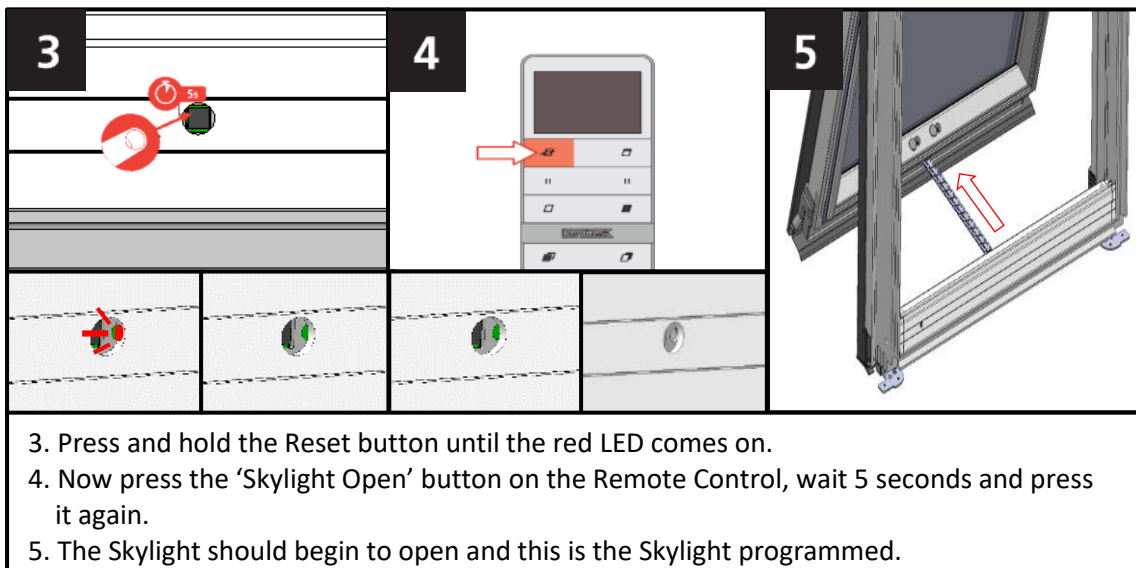
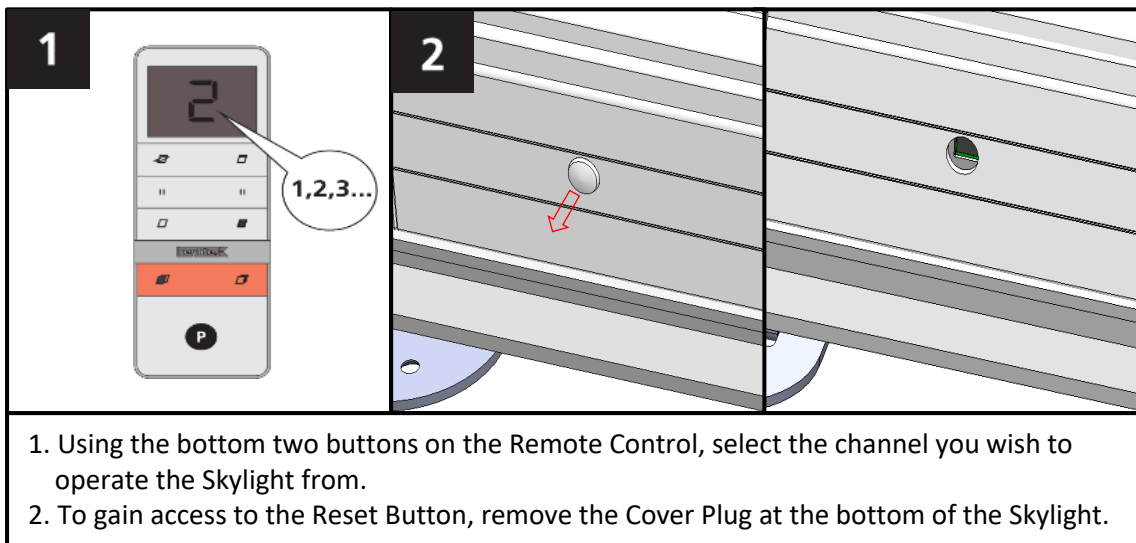
4. Using the bottom two buttons on the Remote Control, select the channel you wish to operate the Skylight from.
5. To gain access to the Reset Button, remove the Cover Plug at the bottom of the Skylight.



6. Press and hold the Reset button until the red LED comes on.
7. Now press the 'Skylight Open' button on the Remote Control, wait 5 seconds and press it again.
8. The Skylight should begin to open and this is the Skylight programmed.



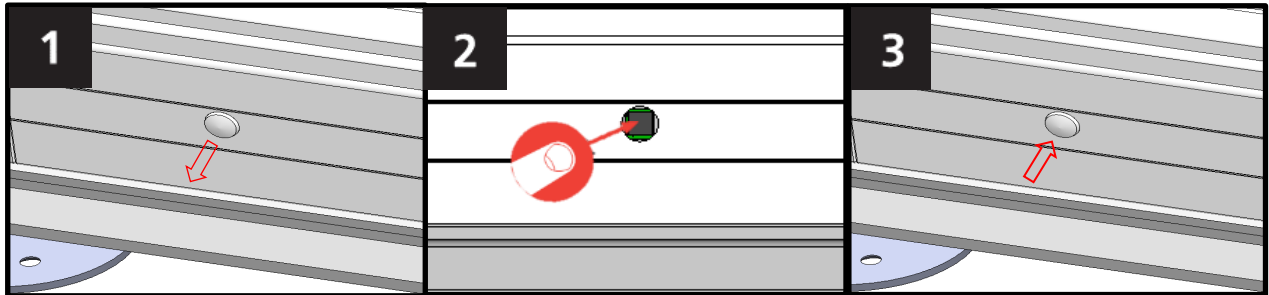
9. Replace the Cover Plug at the bottom of the Skylight and the Set-Up procedure is complete.

3.0 Adding A Skylight To A New Channel

4.0 Re-Setting the Skylight ECU

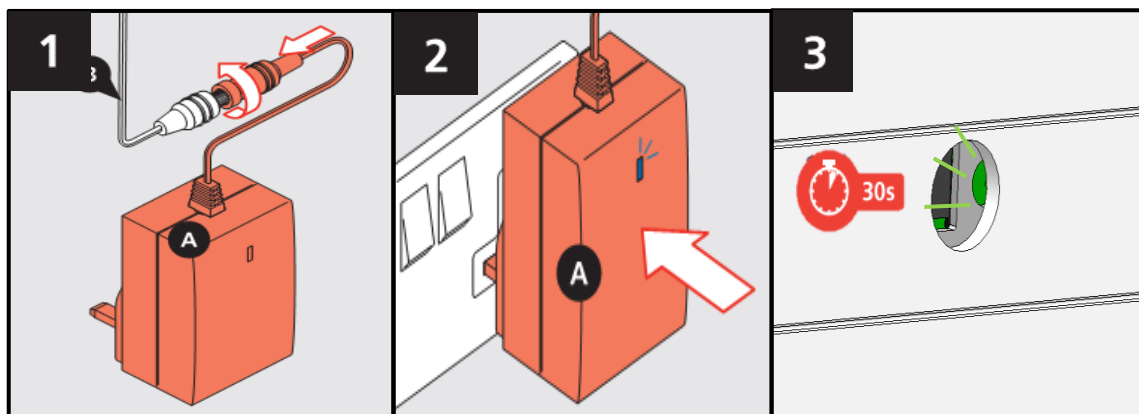
If you wish to completely reset the Skylight and wipe all of its current channels from its memory, you must hold the reset button for a period of around 30 seconds or at least until the LED lights begin flashing Red and Green alternatively.

Once you have done this you will need to leave the window for a further the window will be 30 seconds until it has completely cleared.

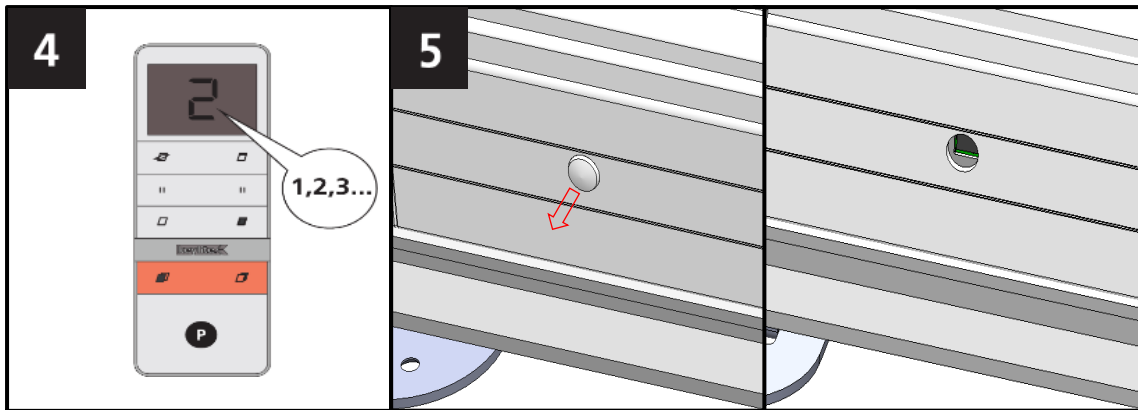


1. Remove the Cover Plug to reveal the Reset Button.
2. Hold in the Reset Button for a period of around 30 seconds
3. Once the ECU has been Re-set you can replace the Cover Plug.

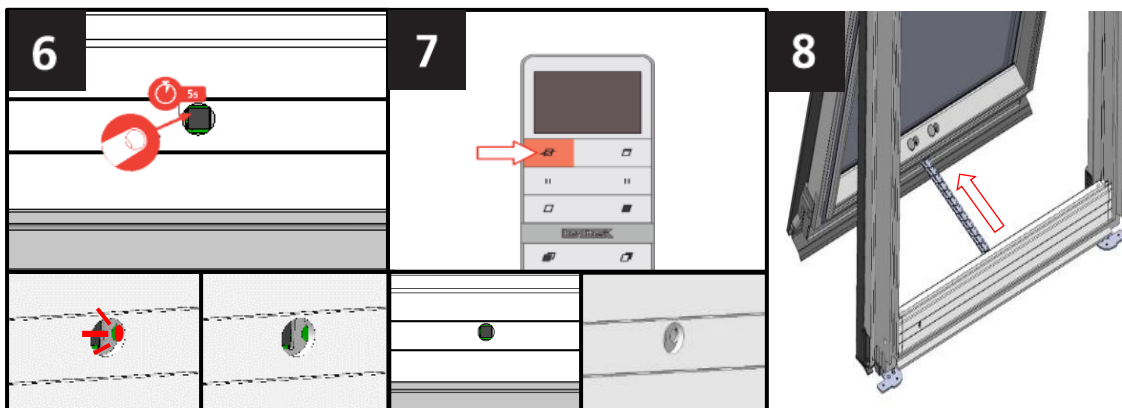
Following this the Skylight will need to be set up again. To set up the Skylight, follow the instructions below.



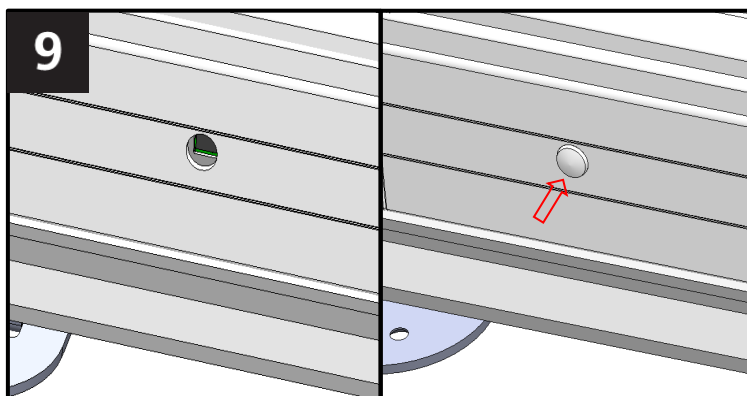
1. Connect the Power Supply as shown in the image above.
2. Plug in the Power Supply and turn it on, a Blue Light will ignite to indicate there is power.
3. When powered up for the first time a green LED will light up for approx. 30 seconds



4. Using the bottom two buttons on the Remote Control, select the channel you wish to operate the Skylight from.
5. To gain access to the Reset Button, remove the Cover Plug at the bottom of the Skylight.



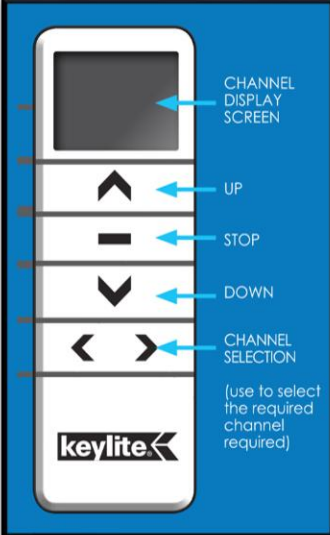
6. Press and hold the Reset button until the red LED comes on.
7. Now press the 'Skylight Open' button on the Remote Control, wait 5 seconds and press it again.
8. The Skylight should begin to open and this is the Skylight programmed.



9. Replace the Cover Plug at the bottom of the Skylight and the Set-Up procedure is complete.

5.0 Skylight Blind Not Working


5.1 Check Remote Control is on correct Channel



Select the channel that the blind was programmed to at the time of the install... I.e. channel 1, 2, 3 etc.

1. Use channel selection buttons to select the required blind channel.
2. If the remote is on the correct channel the blinds should begin to function when the up/down actions buttons are pressed. If this does not happen then the remote will need to be re programmed. See process **XX** below.

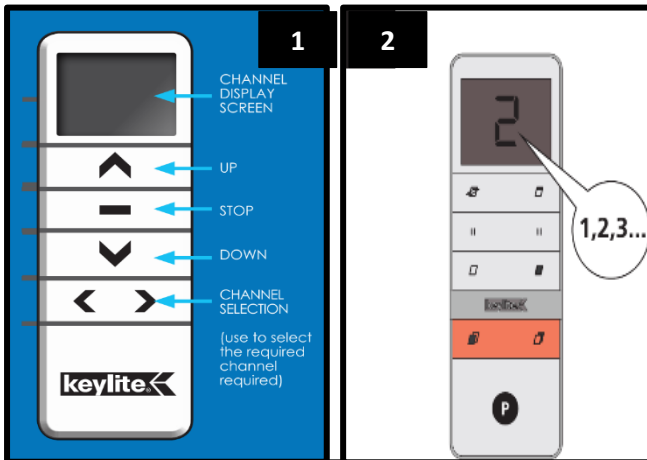
5.2 Remote not working, Check Battery



1. Remove the cover plate from the back side of the remote control.
2. The button battery is located under the cover. As seen in the image above.
3. Locate the battery and replace
4. Re-secure the back plate and the remote is now ready to be connected.

5.3 Are you using the correct Remote Control?

You should always check that you are using the Correct Remote Control (Blind Remote Control and not the Skylight Remote Control) because the Solar Powered Blind **CANNOT** be operated using Skylight Remote Control.



Make sure the remote that you are using is the correct one i.e. the blind remote and not the window remote. The images above show the difference in the remotes.

Images 1 Shows the MK2 (LCD screen) blind remote. This is used to operate the blinds only.

Image 2 Shows the Skylight Remote Control - This is not compatible with the Solar Blind

If you have tried all the above, please refer to the below (Pairing Blind Remote Control MK1, MK2, MK3)

Depending on the Type of Blind you have and the year of manufacture, there are two different pairing instructions. The easiest way to determine what version you require is to look at your remote control.

For Single function remote control (no LCD Screen) please refer to MK1. For Multi-function control panels refer to MK2 and MK3 below.

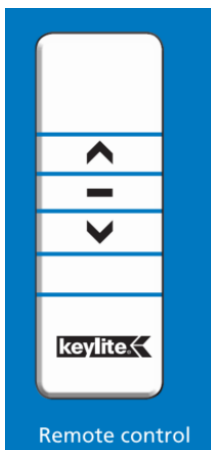
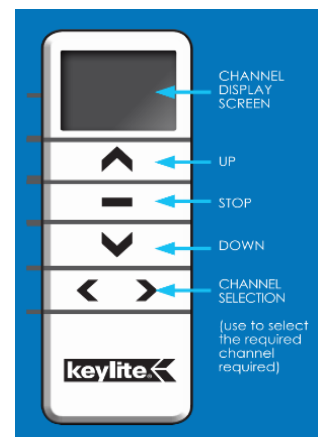


Image Left

This is an image of the MK1 Remote Control. Note there is no LCD screen. Up, Down and stop selection buttons only.

Image Right

This shows the updated version of the blind remote. Note LCD screen and extra channel selection options along the bottom.



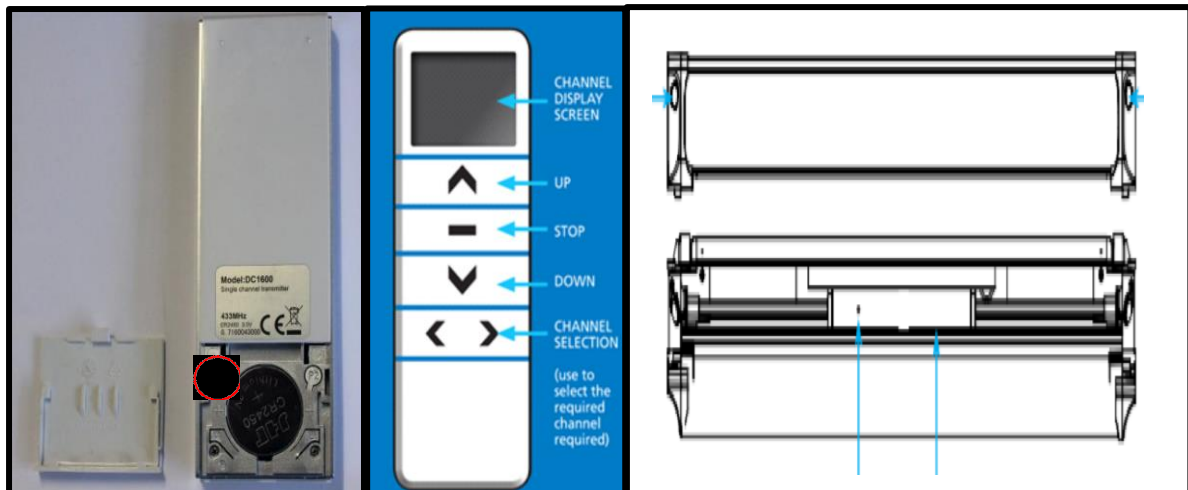
5.4 Pairing the Blind Remote - MK1

		<ol style="list-style-type: none"> 1. Remove the battery cover on the back of the remote. 2. This will allow access to the programming button located beside the battery. 3. The specific one you require will be located at the top left hand side of the battery and is labelled P2.
--	--	--

<ol style="list-style-type: none"> 1. Open up the front hood of the cassette/blind. This is removed by pressing the two buttons at the side of the hood cassette. 2. On the motor there is a small hole with a button key inside. Using a small screwdriver, pen, etc. press and hold this button in until the motor jogs (makes a small moving action). See images above. 		

	<ol style="list-style-type: none"> 3. Press the P2 button in the top left hand corner of the Remote Control and you will notice the Blind should begin to jog. 4. Wait for 3 Seconds and press the P2 button once more and the blind should jog for a second time. 5. Rotate the remote control and press the 'UP' button and the blind should jog for a third time.
--	---

5.5 Pairing the Blind Remote - MK2 & MK3



1. Pull the blind down to mid-point of the window
2. Remove the back battery cover, this will be a full size cover on the newer models, exposing the P2 button.
3. Open up the front hood of the cassette/blind. This is removed by pressing the two buttons at the side of the hood cassette. As per the image above.
4. On the motor there is a small hole with a button key inside. Using a small screwdriver, pen, etc. press and hold this button in until the motor jogs (makes a small moving action). See images above.
5. Select **Channel 1** using the channel select buttons on the front of the remote and then press the **P2** button on the back again.
6. Once the **P2** button has been pressed again then the motor will jog for a second time. This indicates that the remote has been a paired with the blinds. **CLOSE FRONT COVER**

Ps. EACH of these steps needs to be completed within 6 SECONDS or the memory will be forgotten and you will have to repeat over again from the start.

- To connect another blind to the same channel just repeat the steps on the next window ensuring that the channel does not change.
- To have blinds set to different channel the repeat these steps ensuring that the channel is changed for each window.
- To have blinds that open all together set them all to **Channel 0** on the remote.

5.6 Resetting Limits on the Blinds

Deleting the Existing Limits

1. Take the cover of the battery to access the P2 buttons, top left beside the battery.
2. Cancel the pre-set limits- **Press P2-DOWN-P2**. The motor will jog each time the P2 button is pressed.

Set new limits – Up Direction

1. Pull the blind to the middle of the window
2. Press **P2- UP-P2**. NOTE: the motor will jog each time that **P2** is pressed.
3. Press up on the blind remote to move the blind towards the top of the window.
4. When the blind is near the top of the window press **P2** again and the action will begin to step. This allows for more accurate stopping of the motor.
5. When the blind is roughly **25mm** from the top of the window, Press and hold **STOP for 5 seconds**. This will set the top limit of the blind and the motor will JOG to confirm this.
6. To set the bottom limit on the blind, follow the same steps to the bottom of the window. See below.

Set new limits - Down Direction

1. Press the down button on the blind and it will begin to move to the bottom.
2. As the blind is moving press the **P2** button and the motor will begin to step.
3. When there is **25mm** roughly of blind left press and hold the **STOP** button for 5 seconds. This will set the bottom limit and the motor will JOG again to confirm this action.

6.0 Further Assistance & Contact Details

If you have followed all these steps and the remote is still not functioning, contact the Technical team for more information on the number below;

New South Wales

Natural Lighting Products
Sydney Sales Office
Unit 15, 2-8 South Street
Rydalmere
NSW 2116

Customer Service:
1300 859 561

Queensland

Natural Lighting Products
Brisbane Sales Office
Unit 18, 12-18 Ellerslie Road
Meadowbrook
Qld 4131

Email:
info@naturallighting.com.au

Victoria

Natural Lighting Products
Victorian Sales Office
Unit 13, 556-598 Princes Highway
Noble Park
Vic 3174

ACT

Natural Lighting Products
Canberra Sales Office
Unit 7, 87 Collie Street
Fyshwick
ACT 2609

[naturallighting.com.au](https://www.naturallighting.com.au)

Alternatively you can try our YouTube channel links below where you will find a helpful range of videos that can help with any issues regarding the Solar Blind.

1. Pairing The Remote https://www.youtube.com/watch?v=eLkuGAq_yXE
2. Replacing The Battery Pack <https://www.youtube.com/watch?v=JucxG8iYGIA>
3. Full Factory Reset <https://www.youtube.com/watch?v=d2KYZ315pHE>
4. Removing The Blind <https://www.youtube.com/watch?v=ZhhtLMH4kj0>